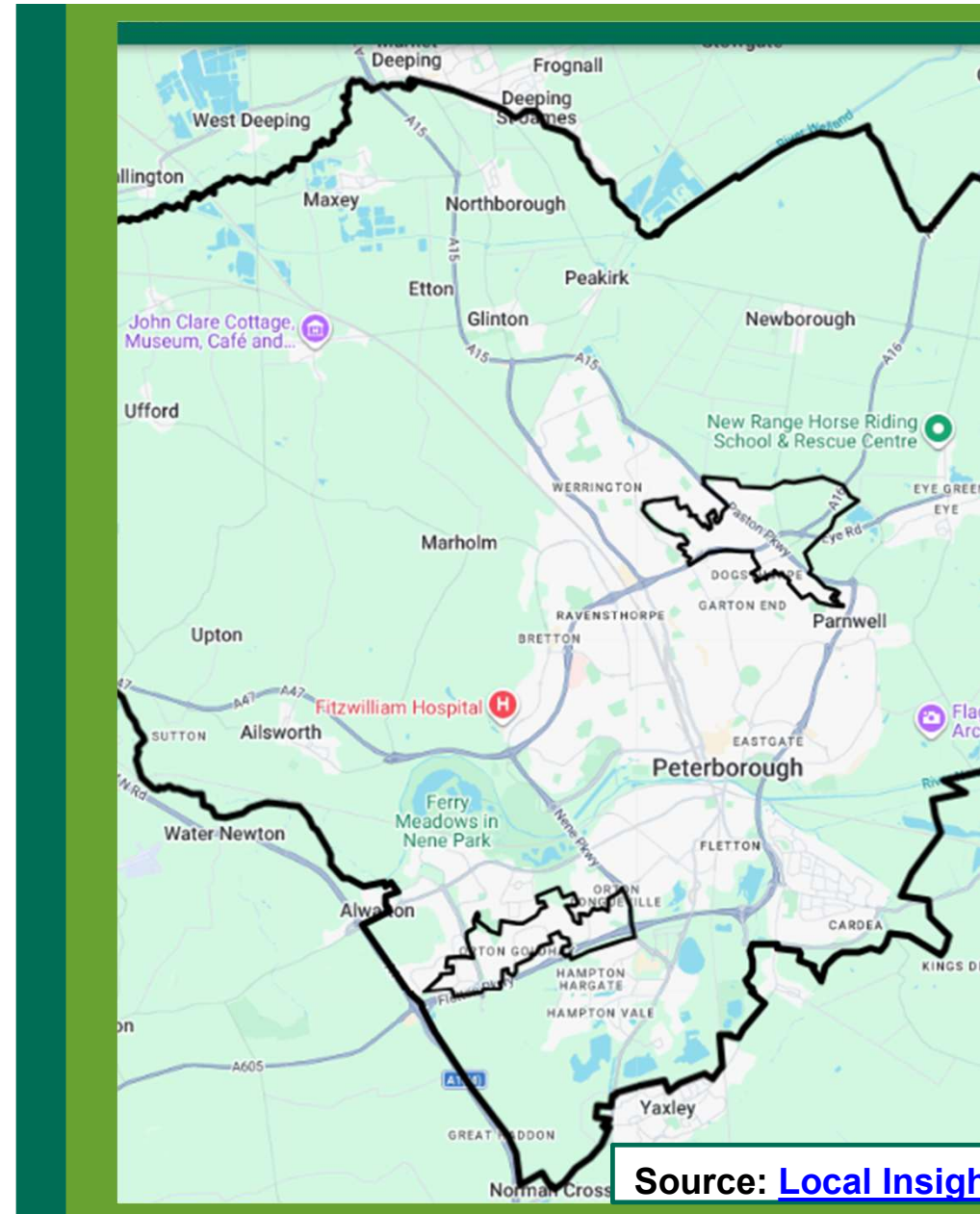


Local Insight- Looking at data within Peterborough- Local Quintiles

Public Health Intelligence,
Peterborough City Council.
www.peterborough.gov.uk



Source: [Local Insight](#)

Purpose of Local Quintiles

To show inequality within a specific Local Authority geography area as opposed to out of the whole of England.

[national vs local quintiles - Google Search](#)

◆ AI Overview

National and local quintiles (specifically within the English Indices of Deprivation) both divide areas into five equal groups (20% each), but they use different reference populations, leading to different insights. [📖 Fingertips | Department of Health and ... +1](#)

- **National Quintiles (20% of England):** Small areas (LSOAs) are ranked against all other LSOAs in England (roughly 33,000+). A "most deprived 20%" area is among the most deprived in the entire country.
- **Local Quintiles (20% of Local Authority):** Small areas are ranked only against others *within the same local authority*. A "most deprived 20%" area is only the most deprived *in that area*. [📖 Fingertips | Department of Health and ... +4](#)

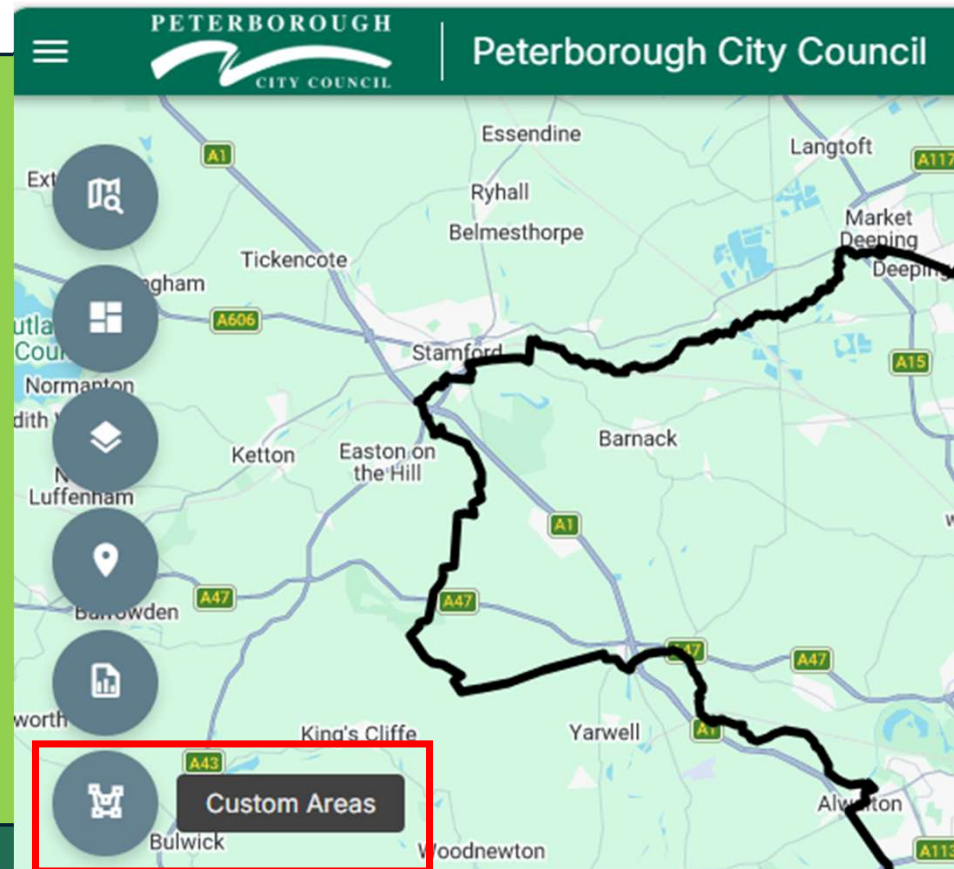
Key Differences at a Glance

Feature 🔗	National Quintiles	Local Quintiles
Reference Area	All of England	Single Local Authority (LA)
Purpose	Comparing deprivation <i>between</i> different LAs	Showing inequality <i>within</i> a specific LA
Percentage Spread	Can be highly unequal (e.g., 50%+ in one quintile)	Always an even spread (20% in each)
Example	20% of England's areas	20% of Bury's areas

Step 1- Load the Local Insight website



Step 2- Click on the button on the left-hand side which is titled 'Custom Areas'



Step 3- Select 'Peterborough LA' from the list and then click on the 'view custom areas' button on the bottom right

The screenshot shows a 'Custom Areas' dialog box with a search bar at the top right containing the text 'Filter custom area name'. Below the search bar is a blue instruction bar that says 'Select an individual area or category'. Underneath, there is a 'Select All' option with a minus sign icon. A list of area categories follows, each with a checkbox and a count in a grey circle with a dropdown arrow:

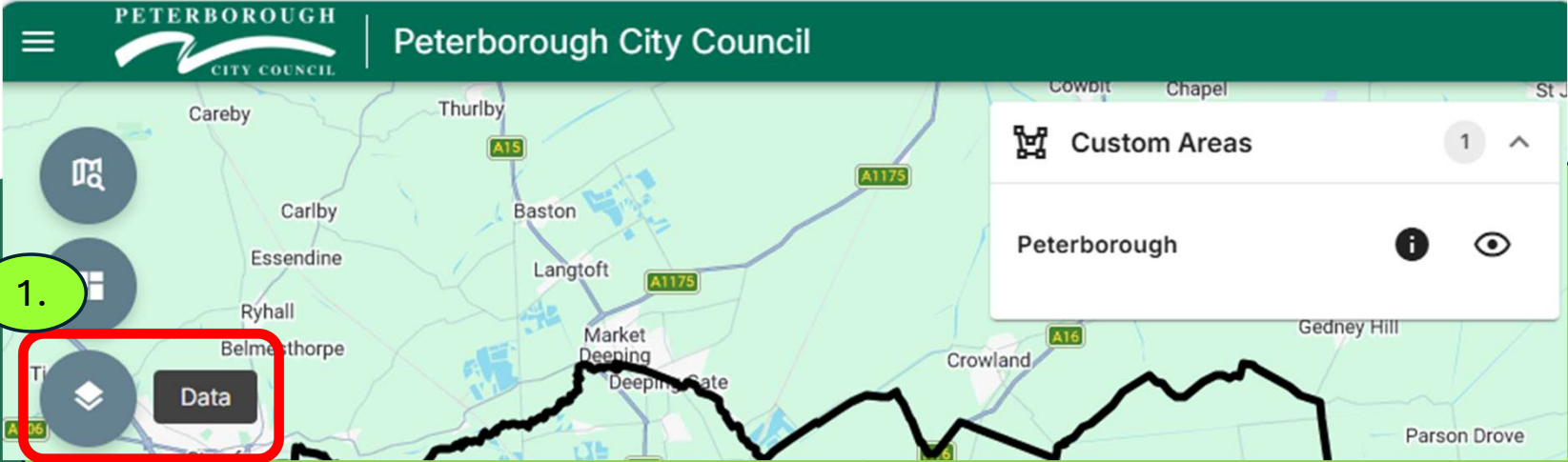
- Peterborough LA (1)
- Peterborough MSOAs (22)
- Peterborough Wards - 2024 (22)
- Pride_in_Place_MSOAs (2)
- Uncategorized (112)

At the bottom of the dialog, there are three buttons: a red 'CLOSE' button, an orange 'CLEAR' button with a red notification bubble containing the number '1', and a green 'VIEW CUSTOM AREAS' button which is highlighted with a red box.

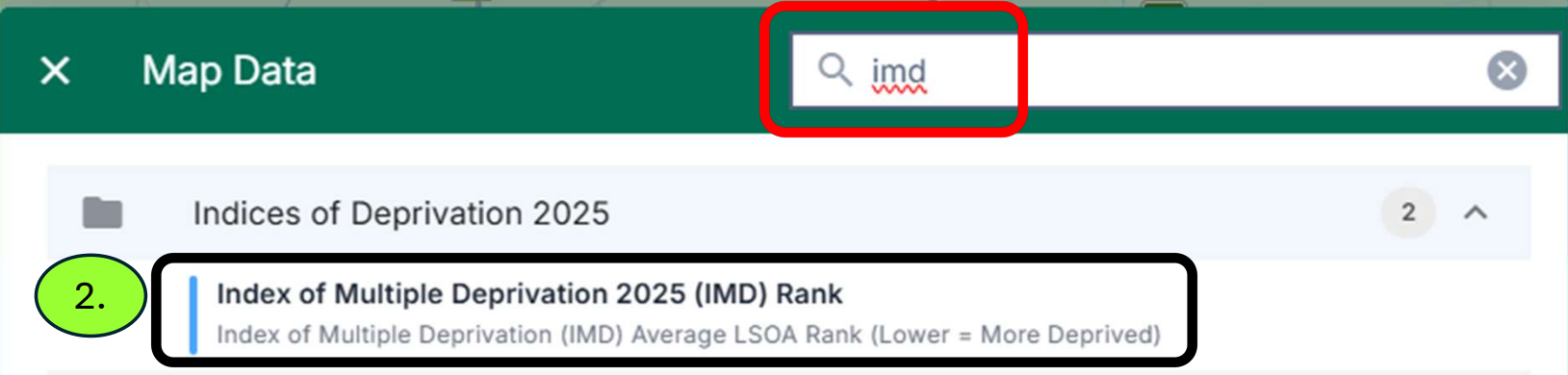
Step 4- The custom area for Peterborough should now be showing on the map, click on the arrow on the top right next to custom areas that's now appeared on the right of the map & you should see that the custom area for Peterborough is showing).



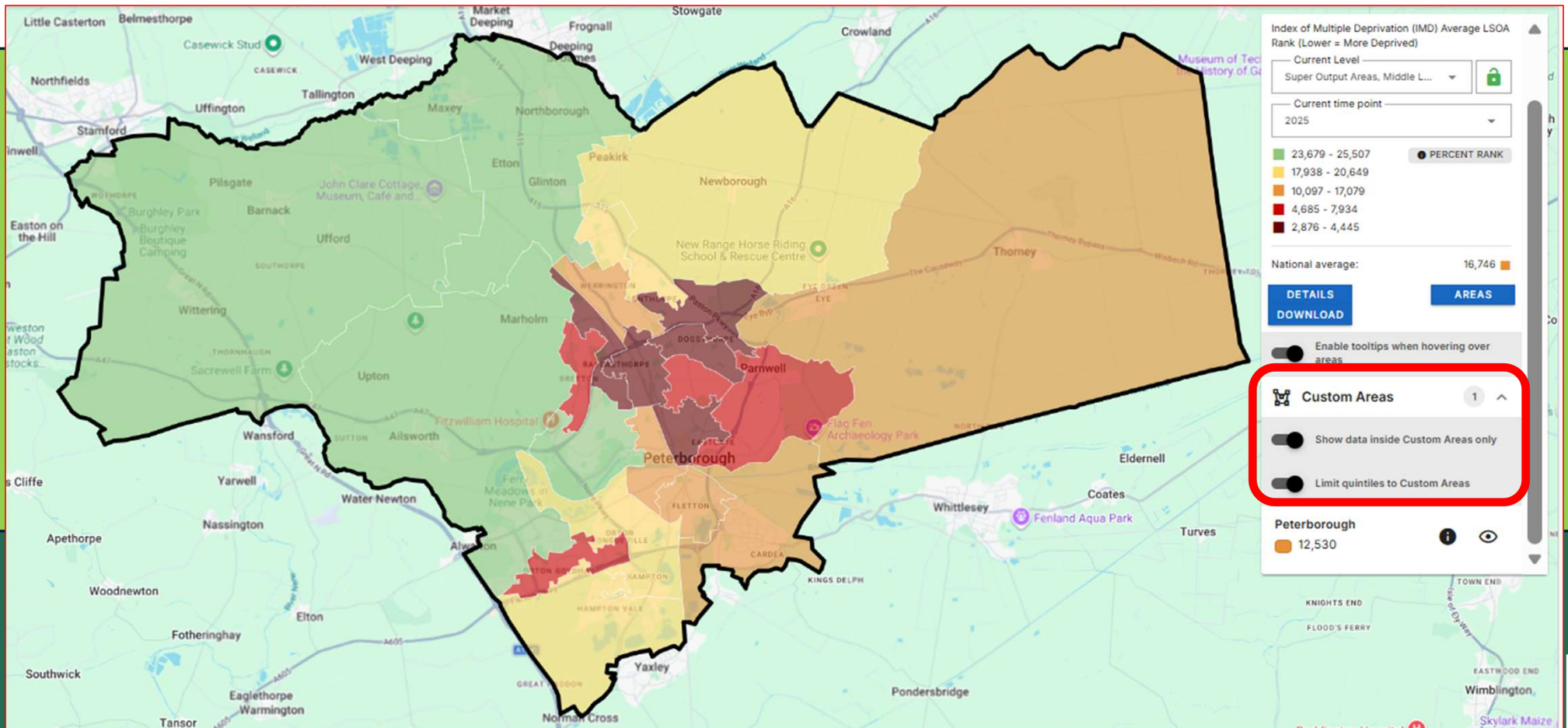
Step 5- Next, choose an indicator from the data button on the left to present on the map.



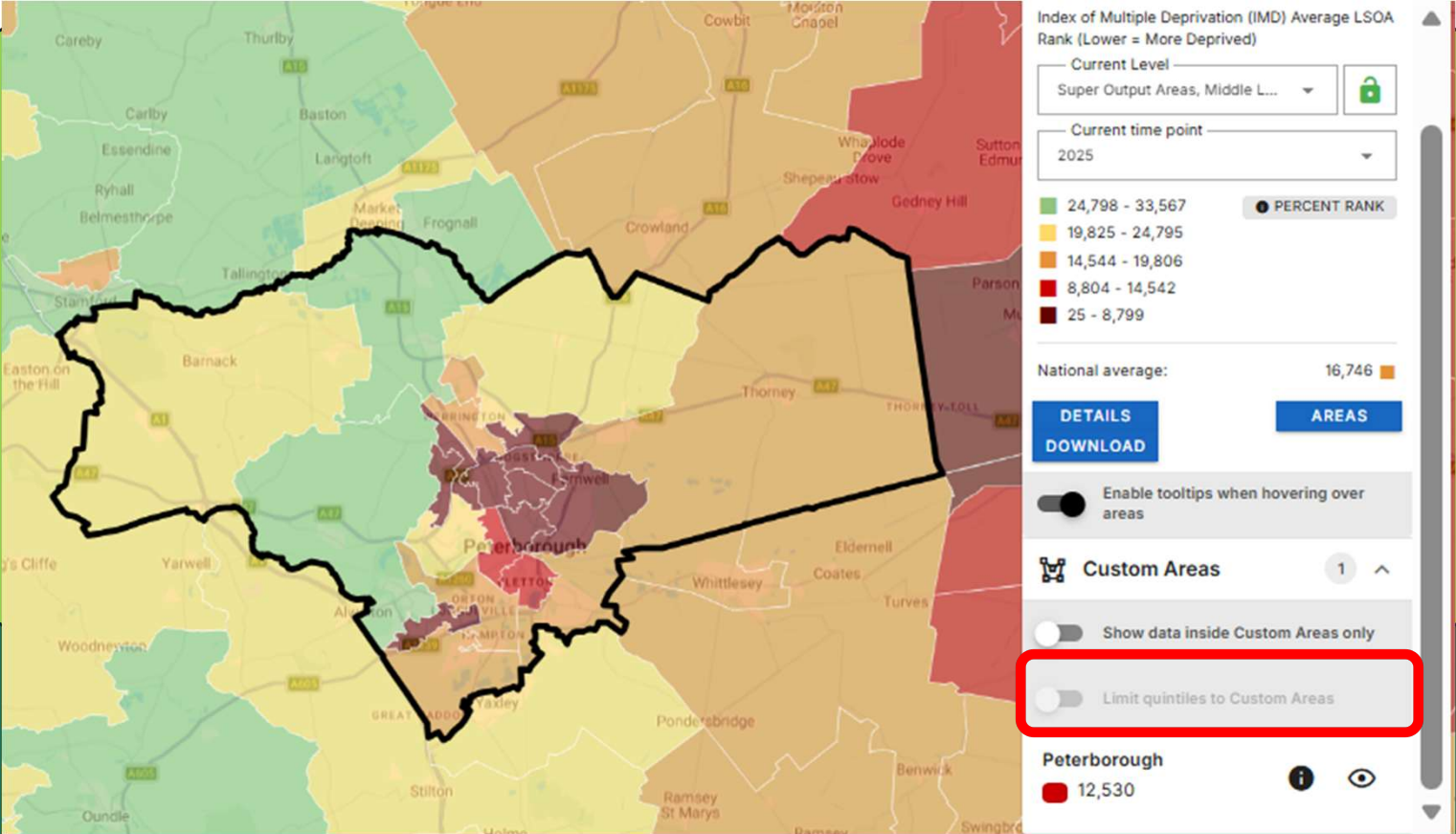
E.g., IMD, here we're going to select 'Index of Multiple Deprivation 2025 (IMD) Rank'. Click to select it.



Step 6- Once selected the data for the map, you'll see information about the data/settings appear on the right, scroll down to the drop down for the loaded custom areas & turn the toggles on, you should then also see the map update- what you are now seeing is the data split into quintiles within Peterborough only.

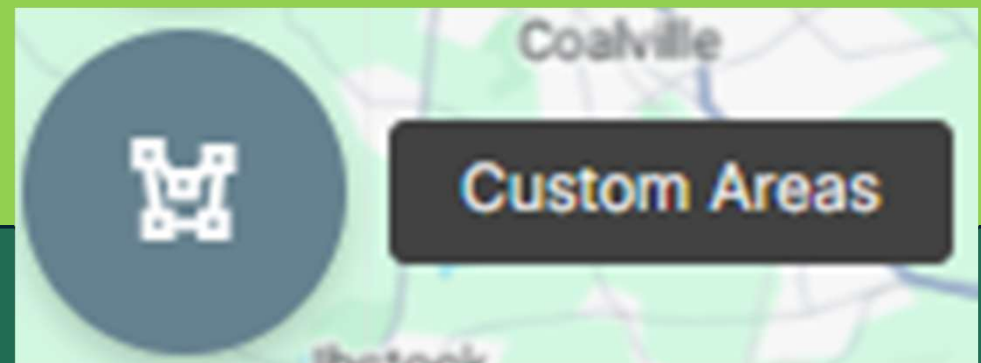
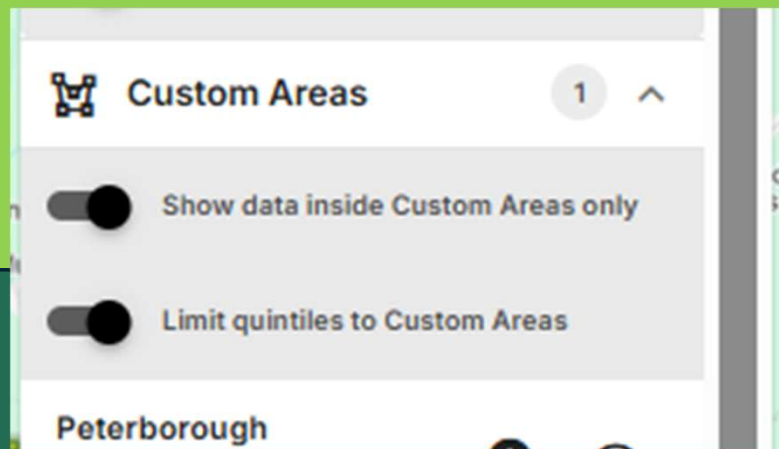


Step 7- To go back to national quintiles- simply turn the toggle off again for 'Limit quintiles to custom areas' & you will see the map update and the data change so that the data is now based on national quintiles.



Important point:

You will only see the toggle options to view local quintiles on the map settings when you have 'Peterborough LA' loaded as a custom area on your map which you will need to do first selecting it from custom areas.





Appendix





Useful links

- [Get started with local quintiles in Local Insight - Local Insight](#)
 - **Link to Peterborough Local Insight:** <https://peterborough.localinsight.org/#/>
(Any data that has orange line next to it in 'map data' is custom data that's been imported- In Peterborough Local Insight, this has just Peterborough data available- e.g., have some data from CCS on breastfeeding & ASQ-3.)
 - **Link to Cambridgeshire Local Insight:** <https://cambridgeshire.localinsight.org/#/>
Cambridgeshire also recently got their own Local Insight: As they develop theirs- it's likely they'll upload equivalent custom data for Cambridgeshire from CCS with time/may also have some different datasets to Peterborough- we intend to work with Cambridgeshire, so useful data is showing on both websites.
 - **Local Insight 'How to guide'** - Final Peterborough Council Local Insight 'How to' Guide .pptx
 - **Other: Cambridgeshire & Peterborough Insight- Data and Dashboards** (Shared website used by Cambridgeshire and Peterborough- Includes Power BI dashboards on topics such as, Mental Health and, Winter Surveillance as well as, JSNAs. [Cambridgeshire & Peterborough Insight – Health and Wellbeing Hub – Data and Dashboards](#))
- 